



MFD Precision

Company Profile 2023

[Company Philosophy]

Company Philosophy

Focusing on quality and customer satisfaction

Established in 1992, MFD Precision Engineering is today a highly integrated solution provider of precision-machined components with strategic manufacturing facilities in Malaysia and Thailand.

We are committed to providing products and services that meet or exceed all customer requirements and applicable standards and specifications. Each employee is committed to this goal.

The MFD Corporate Quality Policy is to continually improve machining performance by supplying on time goods, services and information of a quality standard that shall consistently meet or exceed the requirements of our customers.

[Company Values]

Integrity
Efficient

Commitment
Dependable



Our precision, your success.

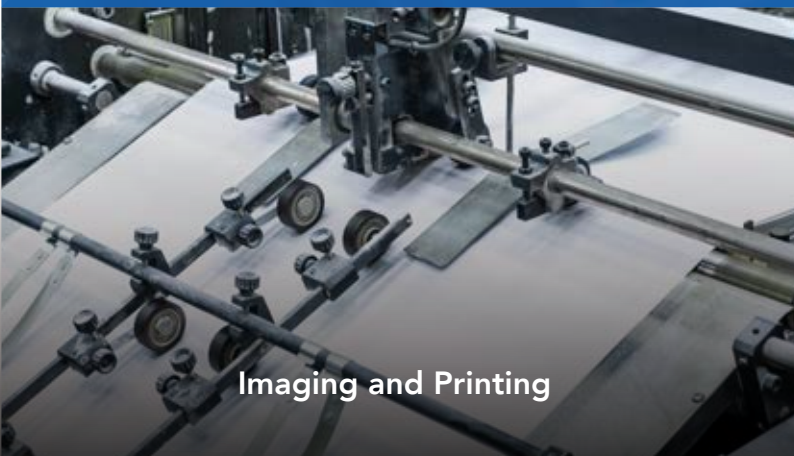
With our advanced manufacturing capabilities, quality management and competitive pricing, MFD is absolutely focused on helping you - our valued clients succeed.

[Business Field]

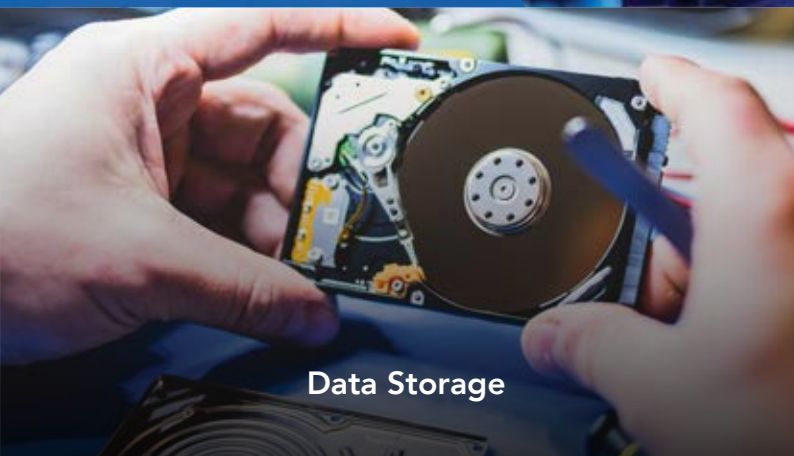
Business Field

A wide variety of business fields supporting everything from automotive to consumer electronics.

MFD serves diverse market sectors comprising customers in imaging and printing, data storage, automotive, consumer electronics and domestic appliances. We provide quality solutions to all your machining needs and our technical capabilities, quality processes and efficiency are constantly being upgraded through relentless technical training and process review at all levels.



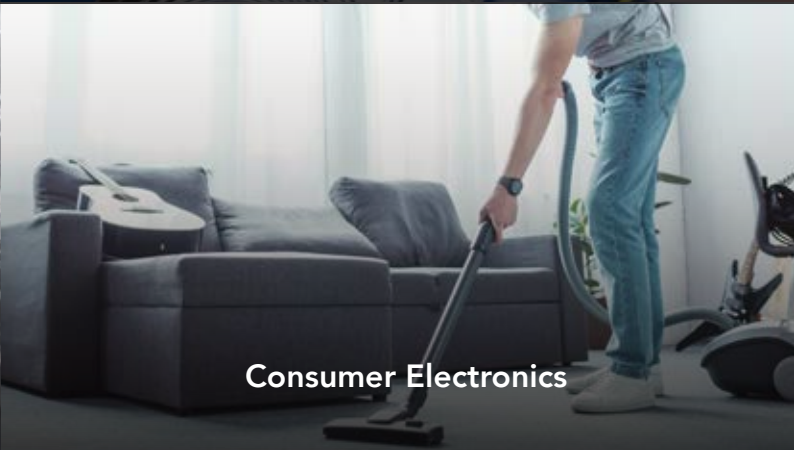
Imaging and Printing



Data Storage



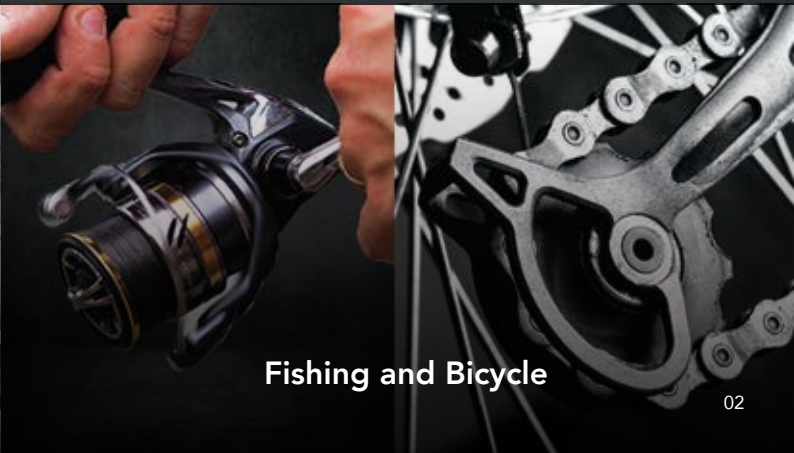
Automotive



Consumer Electronics



Aerospace



Fishing and Bicycle

[Manufacturing Facilities]



**Manufacturing capabilities
that respond to your needs**

Manufacturing Facilities

[MFD Precision Sdn. Bhd. (Malaysia)]

- Established: 1992
- Paid-up Capital: RM 1 Mil
- Factory Build-up Area: 2,000 m²
- No. of Employee: 30
- Products: Precision turned parts for Aerospace Engineering, A/V products, home appliances and etc.

Key Machines:

- 35+ units of CNC Auto Lathe
 - Cincom B-12
 - Star SR-20
 - Star SB-16/SB-20
 - Star RNC-10 / RNC-16
- 1 unit of Machine Center
 - Makino PS 65

Other Machines: Stamping, Thread Knurling, slotting, tapping, milling and more.

[MFD Precision Co., Ltd. (Thailand)]

- Established: 2003
- Paid-up Capital: THB 25 Mil
- Factory Land Area: 7,200 m²
- Factory Build-up Area: 7,800 m²
- No. of Employee: 70
- Products: Precision turned parts for printer shafts, hard disk drives, automotive and etc.

Key Machines:

- 65+ units of CNC Auto Lathe
 - Cincom B-12/A-20
 - Star SB-16/SB-20
 - Tsugami BM-16/BO-12/BO-20
 - Star SR-10J/SR-32J
 - Miyano BNC-42
- 3 units of Machine Center
 - Makino PS 65
 - Fanuc Robodrill α-D21MiA

Other Machines: Centerless Grinding, Stamping, Thread Knurling, slotting, tapping, milling and more.

[Key Capabilities]



Key Capabilities

At MFD, we provide quality solutions to all your machining needs. Our core manufacturing is using CNC multi axis Auto Lathe with capabilities to support mass production items from \varnothing 3mm to \varnothing 42mm and Length of 500mm or longer

[Key Machines]

Our machinists have accumulated more than 50 years of extensive hands-on machining experiences in precision metalwork across diverse industry sectors.



- CINCOM B-12
- CINCOM A-20



- TSUGAMI BM-16
- TSUGAMI BO-12/20



- STAR SR-10J
- STAR SR-32J



- STAR SB-16
- STAR SB-20



- MIYANO BNC42



- MAKINO PS 65



- FANUC ROBODRILL
 α -D21MiA



- FIXED HEAD CAM
AUTO LATHE

Product lineup

An extensive product lineup that caters to our valued customers

Imaging & Printing

Roller shafts for imaging and printing products.

1 SUM 24 L

2 SUS 303



Data Storage

Parts for hard disk components such as read/write heads and drive bay.

1 SUS 303



Automotive

Motor shafts, joints, nuts and bolts for the automotive industry.

1 SUS 303

2 SUJ2

3 S45C



Consumer Electronics

Parts for everyday consumer electronics like vacuum cleaner, hairdryers and more.

1 SUM 24 L

2 SUS 303

3 Brass



Aerospace

Parts from titanium and AMS Grade materials used in commercial aircraft engines.

1 Titanium

2 AMS Grade Materials



Fishing & Bicycle

Parts for fishing reels and bicycle transmission components

1 SUS 303

2 Brass



Milling

Wide variety of parts made from milling machine.

1 Aluminium

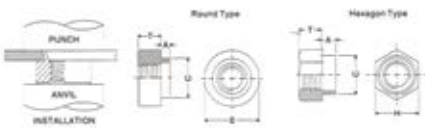
2 Brass



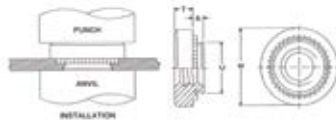
MFD Fasteners

Standard fasteners developed by MFD Precision as an alternative to PEM fasteners. Detailed catalogue with specifications available.

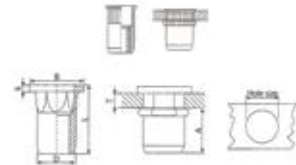
Riveting Nuts



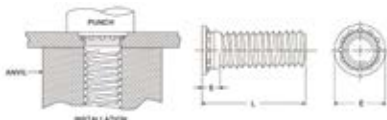
Self Clinching Nuts



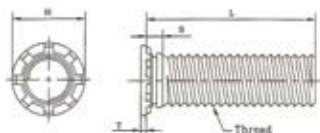
Flush Head Studs



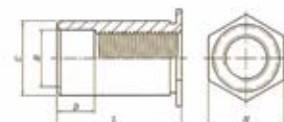
Riveting Studs



Round Head Studs



Blind Threaded Studs



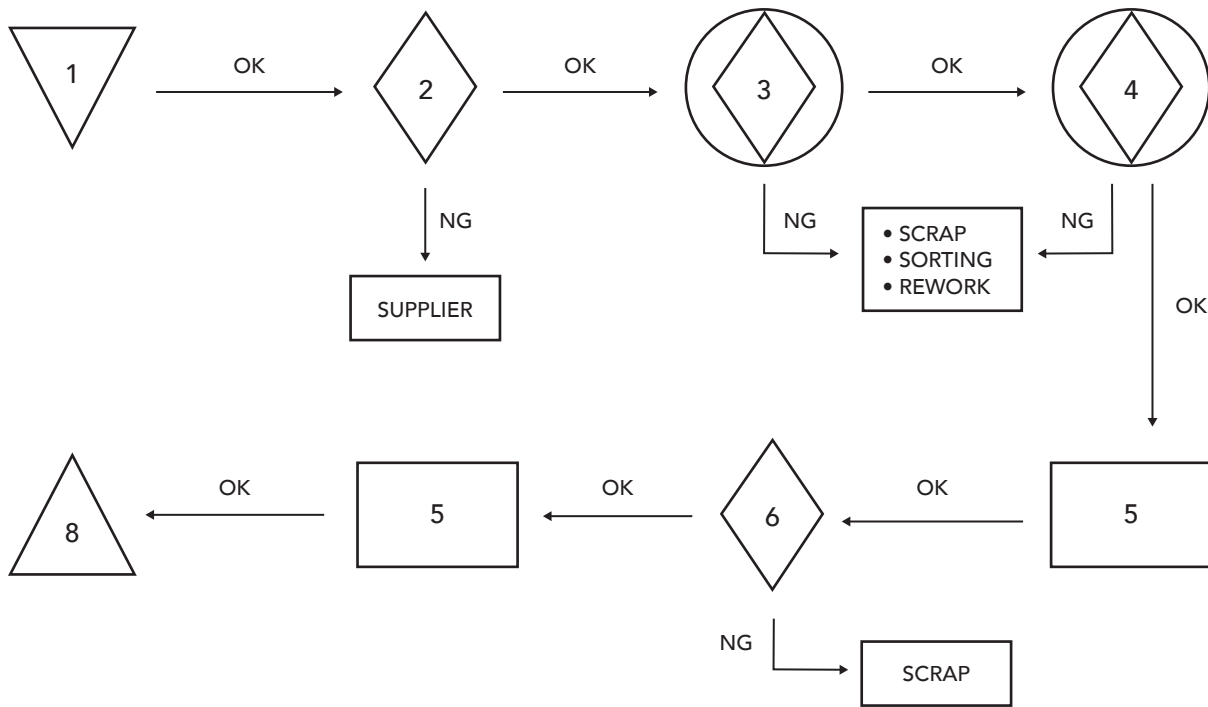


Strict Quality Control and Quality Assurance Processes

MFD practices an Acceptable Quality Level (AQL) of 0.4 to ensure our products are of the highest quality for our customers. With the advancement of technology in the market, the needs of our customers are becoming more and more diverse.

To meet these ever-evolving needs, MFD established a strict quality management system based on ISO 9001, and enforce built-in quality and conduct continuous improvement activities to increase customer satisfaction.

[Process Flowchart]



Process	Control Item	Frequency	Measuring Instrument	Responsibility	Records
1. Receive raw materials	Appearance check	Every P/O	<ul style="list-style-type: none"> Phy. count / weighing scale 	<ul style="list-style-type: none"> Store 	<ul style="list-style-type: none"> Material Incoming Record Stock card
2. Incoming inspection	<ul style="list-style-type: none"> Material spec Packing appearance Quantity/weight Dimensions check 	Every Lot	<ul style="list-style-type: none"> Phy. count / weighing scale Digimatic micrometer 	<ul style="list-style-type: none"> IQC Inspector Store 	<ul style="list-style-type: none"> Raw Material D/O Inspection sheet
3. Machine setting	<ul style="list-style-type: none"> Appearance check Dimensions check Other specific req. 	Every 5-10pcs per every startup of production	<ul style="list-style-type: none"> Microscope Profile projector Digimatic micrometer Dial indicator Others 	<ul style="list-style-type: none"> Machine setter IPQC Inspector to verify 	<ul style="list-style-type: none"> IPQC Form Process drawing
4. Production	<ul style="list-style-type: none"> Appearance check Dimensions check Other specific req. 	Every hour	<ul style="list-style-type: none"> Microscope Profile projector Digimatic micrometer Dial indicator Others 	<ul style="list-style-type: none"> IPQC Inspector 	<ul style="list-style-type: none"> In-process Inspection form Production daily record Job ticket
5. Degreasing	Oil density		<ul style="list-style-type: none"> Visual 	<ul style="list-style-type: none"> Production operator 	<ul style="list-style-type: none"> Job ticket
6. Outgoing QC	<ul style="list-style-type: none"> Appearance check Dimensions check Other specific req. 	<ul style="list-style-type: none"> AQL 0.4 Check 100% CD 	<ul style="list-style-type: none"> Microscope Profile projector Digimatic micrometer Dial indicator Others 	<ul style="list-style-type: none"> Outgoing section 	<ul style="list-style-type: none"> Go inspection form Job ticket Outgoing report
7. Packing	<ul style="list-style-type: none"> Appearance check Packing standard Quantity 		<ul style="list-style-type: none"> Visual Phy. count / weighing scale 	<ul style="list-style-type: none"> Store packing 	<ul style="list-style-type: none"> Store daily report
8. Storage	<ul style="list-style-type: none"> Store packing list 			<ul style="list-style-type: none"> Store keeper 	<ul style="list-style-type: none"> Stock card



Major End Customers

MFD supports the major suppliers of these companies below



Imaging and printing parts for HP, Sharp and Canon's supplier



Hard disk parts for WD's supplier



Automotive parts for Denso's supplier



Aerospace parts for Barnes Aerospace (Singapore MRO division)

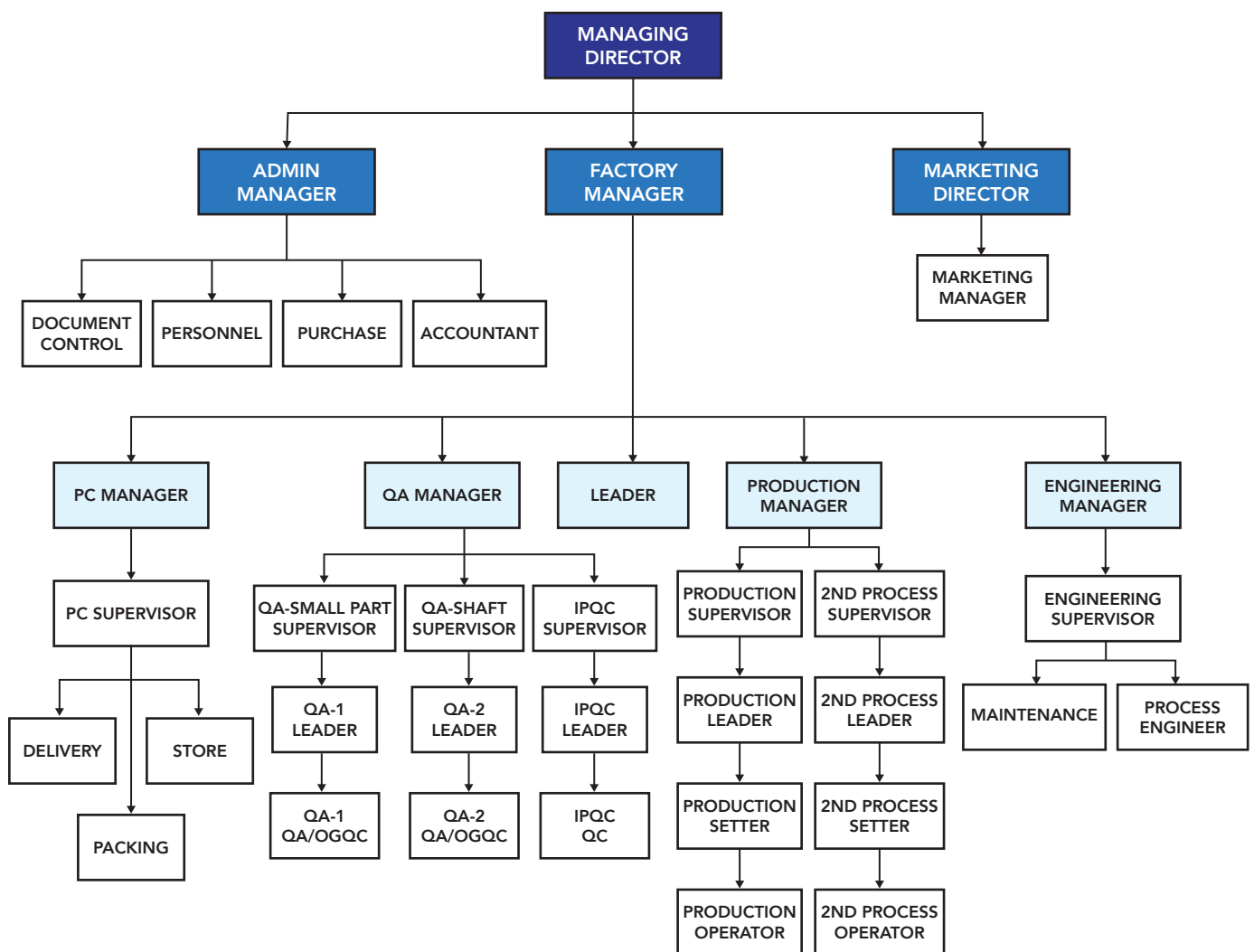


Consumer electronic parts for Dyson's supplier



Fishing and bicycle parts for Shimano's supplier

Organization Chart





[Company Profile]

Name	MFD Group
Established	1992
Paid-up Capital	1.5 million SGD
Factory Land	9,200 m ²
Employees	> 100
Key Machines	> 100 units of CNC Auto Lathe 4 units of Machining Center
Other Machines	Centerless grinding, Stamping, Thread Knurling, Slotting, Tapping, Milling and more.
Locations	Thailand, Malaysia (Factory) Singapore (Office)
Products	<ul style="list-style-type: none"> • MFD Fasteners • CNC Precision Products • CNC Precision Turned Parts • CNC Precision Milling Parts • Precision Engineering • Precision Metalworks • Sub-contract Manufacturer • Custom Metal Parts • Machine Tools

[Milestones]

- 1992 :** Set up first manufacturing facility in Malaysia, Johor Bahru.
 - 1998 :** Moved to new factory at Plentong (Johor Bahru, Malaysia) with built-up area of over 2,000 m².
 - 2003 :** Established new factory in Thailand to support our clients.
 - 2006 :** Moved to new factory at Wangnoi (Ayutthaya, Thailand) with built-up area of over 1,800 m².
 - 2007 :** MFD Thailand certified ISO 9001:2015
 - 2012 :** MFD Malaysia certified ISO 9001:2008.
 - 2012 :** Expanded Thailand factory to 3,600 m².
 - 2016 :** Established Singapore office to support our new Aerospace client.
 - 2022 :** Expanded Thailand factory to 7,200 m².
 - 2023 :** Developed and manufacturing MFD brand standard fasteners.
- IATF 16949 Certificate in process with BSI, certification by November 2023.



CERTIFICATE

This is to Certify that the Management System of

MFD Precision (Thailand) Co., Ltd

130/124WANGNOI FACTORY LAND SOI 13, MOO 3, PHAHOLYOTHIN 68 KM,
TAMBOLWANG-CHULA, AMPURWANGNOI, AYUTTHAYA,
13170 THAILAND

has been audited and found to comply with the requirements of:

ISO 9001:2015 (Quality Management System)

For the Scope of activities described below:

MANUFACTURE OF PRECISION TUNED PARTS

Certificate No.: TH81115A

<u>Date of initial registration</u>	<u>Date of this Certificate</u>	<u>Surv. audit on or before/ Certificate expiry</u>	<u>Recertification Due</u>
28 October 2017	29 September 2021	27 October 2022	27 October 2023

Validity of this certificate is subject to successful completion of surveillance audit on or before due date, in case surveillance audit not conducted this certificate shall be suspended/cancelled.



Director

For verification and updated information concerning the present certificate visit to www.lmscert.com

This Certificate is the property of LMS Certification Limited and shall be returned immediately when demanded.



KAB-QC-71



LMS Certification Limited
Labrynth Business Centre, 43 Middle Hill Gate, Stockport,
Great Manchester, England-SK1 3DG
Phone :+44 208 935 5094
Company No.: 11029176
Visit :- www.lmscert.com
E-mail :- info@lmscert.com





Certificate of Registration

MFD PRECISION ENGINEERING SDN BHD

No. 7, Jalan Sri Plentong 3, Sri Plentong Industrial Park, 81750 Masai, Johor Darul Takzim, Malaysia.

Operate a management system that complies with the requirements of

ISO 9001:2015

With the scope:

Manufacturing of Metal Product including general mechanical engineering works

EA Code: 17 & 34

Certificate No. QM 2955

Originally Registered: 28th January 2011

Registered by WQA: 28th January 2011

Re-Certification: 10th November 2023

Latest Issue: 10th November 2022

Signed on behalf of WQA

Validity of this certificate can be checked by contacting:
Worldwide Quality Assurance Ltd
Severn House,
Mandale Business Park,
Durham,
DH1 1TH
www.worldwideqa.com



134

This certificate remains the property of Worldwide Quality Assurance Ltd and must be returned on request.



MFD Precision